

BMP

MINING PRODUCTS

Berco Mining Products offers an efficient, reliable and economical range of solutions for mining operations, catering for the undercarriage needs of open pit mining, quarrying or earthmoving in large-scale land reclamation.

Superior engineering and technology, comprehensive know-how and state-of-the-art manufacturing ensure the total quality of the products and services offered.

Our team of engineers is available to help you choose or design the most effective and efficient solution to your specific undercarriage needs.

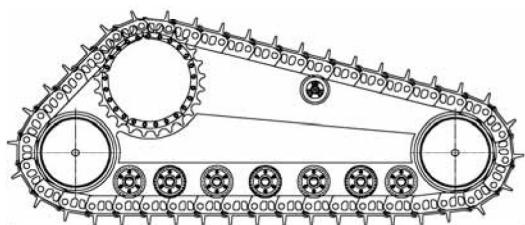
THE WIDEST CHOICE

- A complete line of **undercarriage components** for track-type machine classes ranging from **50 to 300 ton** and **215.9-350 mm (8½"-13.78") chain pitch**
- Dry, greased, sealed & lubricated chain versions.
- **Arctic** (-50°C) version and track chains with life-time seal groups upon request
- **Forged shoes** for heavy duty applications
- Track chains for **special applications**: large conveyor systems, pipeline handling, etc.



FORGED SHOES

Forged shoes for **extreme applications**, where greatest mechanical and wear resistance properties are needed

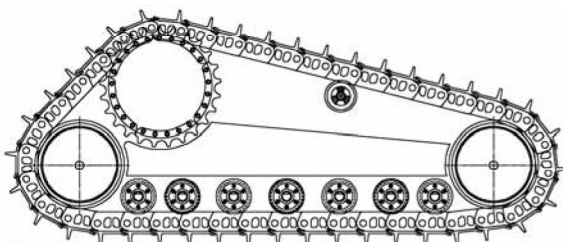


CLASS D8K - D155
Pitch: 228.6 mm - 9"

CLASS D9N/R - D275
Pitch: 240 mm - 9.44"

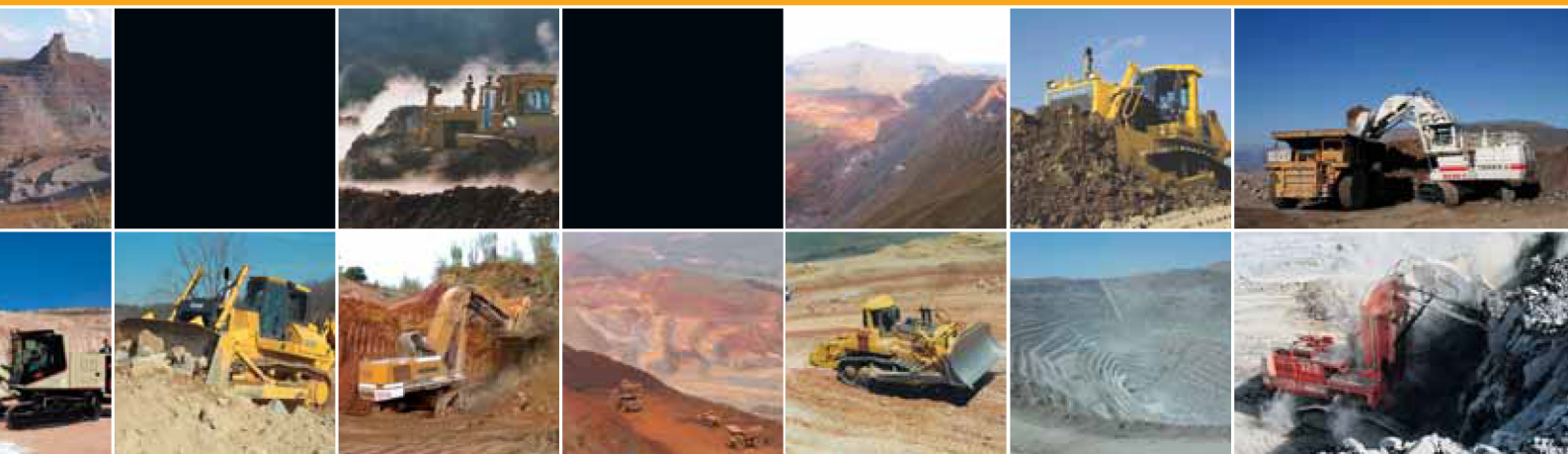
RH 120C

- Greased unsealed track chain
- **Chain pitch 350 mm (13.78")**
- Double grouser forged shoe, width 800 mm (31½")
- Track roller assembly, single flange, with oil fill plug on collars and locking pins, reinforced shaft dimensions



CLASS D10N/R
Pitch 260 mm - 10¼"

CLASS D375
Pitch 280 mm - 11"



THE WIDEST CHOICE OF UNDERCARRIAGE FOR DOZERS

- Components for: CAT D8, D9, D10, D11 classes; Dresser TD25, TD40; Fiatallis FD30, FD40, FD50; Deere 1050C; Komatsu D135, D155, D275, D355, D375, D455, D475; Liebherr PR751, PR752 and other machines
- **Chain pitch from 215.9 to 317.5 mm (8½"-12½")**
- Track links are forged, quenched and tempered, rail surface induction hardened to increase the wear resistance (HRC>45)
- **Extreme service** single grouser shoes available



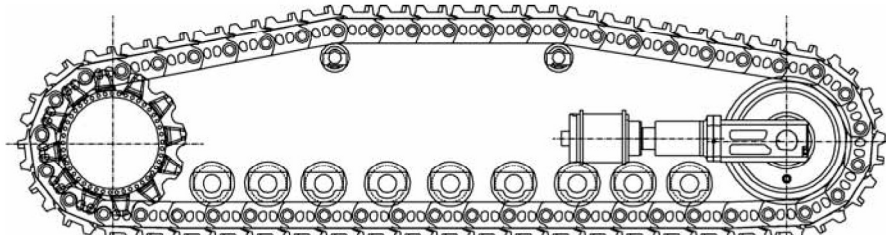
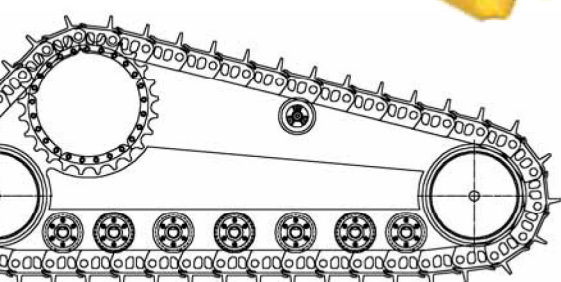
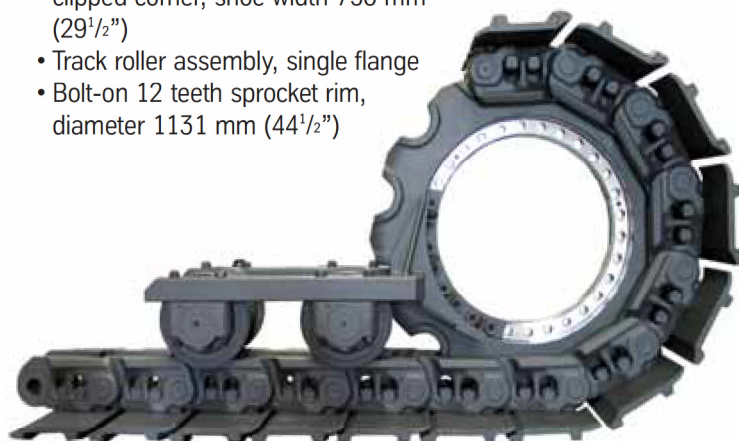
TRACK CHAINS WITH BPR

- For D9L, D9N, D9R, D10N, D10R, D11N, D11R, D275, D375, D455 and D475 machines
- Lubricated track chains with **snap rings** in all joints (BPR)
- **BPR - Berco Pin Retention** - improves operating life of components. The snap rings on the pin ends provide a perfect sealability of the track chains. Side loads can be partially supported by this device
- D10 and D11 are available with **lifetime seal groups**, for applications in which the life of the seal becomes the critical factor for the life of the chain



LIEBHERR R984C

- Track group, greased, sealed, **chain pitch 280 mm (11")**
- Double grouser shoes, open center, clipped corner, shoe width 750 mm (29½")
- Track roller assembly, single flange
- Bolt-on 12 teeth sprocket rim, diameter 1131 mm (44½")



CLASS D11N/R - D475
Pitch 317,5 mm - 12½"

300 TON CLASS EXCAVATOR
Pitch 350 mm - 13.78"